



## Netrix- Aeroscout integration



Netrix- Aeroscout integration

11/09/2013

## **Copyright**

This document may not be copied in whole or in part or otherwise reproduced without prior written consent from IndigoCare Europe or IndigoCare USA, except where specifically permitted under international copyright law.

## **Disclaimer**

The information in this document is subject to change without notice. IndigoCare Europe or IndigoCare USA assumes no responsibility for inaccuracies or omissions and specifically disclaims any liabilities, losses, or risks, personal or otherwise, incurred as a consequence, directly or indirectly, of the use or application of any of the contents of this document. For the latest documentation, contact IndigoCare Europe or Indigocare USA.

This publication may contain examples of screen captures and reports or database used in daily operations. Examples may include fictitious names of individuals and companies. Any similarity to names and addresses of actual businesses or persons is entirely coincidental.

All examples of patient information in this document are fictitious. Any resemblance to a real patient or facility is purely coincidental. The owners and users of this product are solely responsible for complying with all applicable patient information laws. The users, by their use of this product, agree to indemnify the manufacturer and/or seller of this product against all claims, litigation, and suits filed for patient information violations.

## **Intended use**

Use this product only for the purpose it was designed for; refer to the data sheet and user documentation for details. For the latest product information, contact Indigocare Europe or IndigoCare USA.

This hardware installation guide is a working and supporting tool for certified engineers for installing and maintaining iCall installations.

## **FCC compliance**

This equipment has been tested and found to comply with the limits for a Class B, pursuant to part 15 of the FCC Rules. These limits are designed to provide reasonable protection against harmful interference when the equipment is operated in a commercial environment. This equipment generates, uses, and can radiate radio frequency energy and, if not installed and used in accordance with the instruction manual, may cause harmful interference to radio communications.

You are cautioned that any changes or modifications not expressly approved by the party responsible for compliance could void the user's authority to operate the equipment.

### Contact information

IndigoCare USA  
1001 South Dairy Ashford, Suite 100  
Houston, TX 77077  
USA

T: +1 713.595.6698  
F: +1 713.595.6699  
Email: [usa@indigocare.com](mailto:usa@indigocare.com)  
[www.indigocare.com](http://www.indigocare.com)

IndigoCare Europe  
Schoebroekstraat 48  
3583 Paal  
Belgium

T: +32 11 247090  
F: +32 11 247099  
Email: [Europe@indigocare.com](mailto:Europe@indigocare.com)  
[www.indigocare.com](http://www.indigocare.com)

## Content

1.	General purpose .....	5
2.	Implementation.....	5
	Programmation .....	7

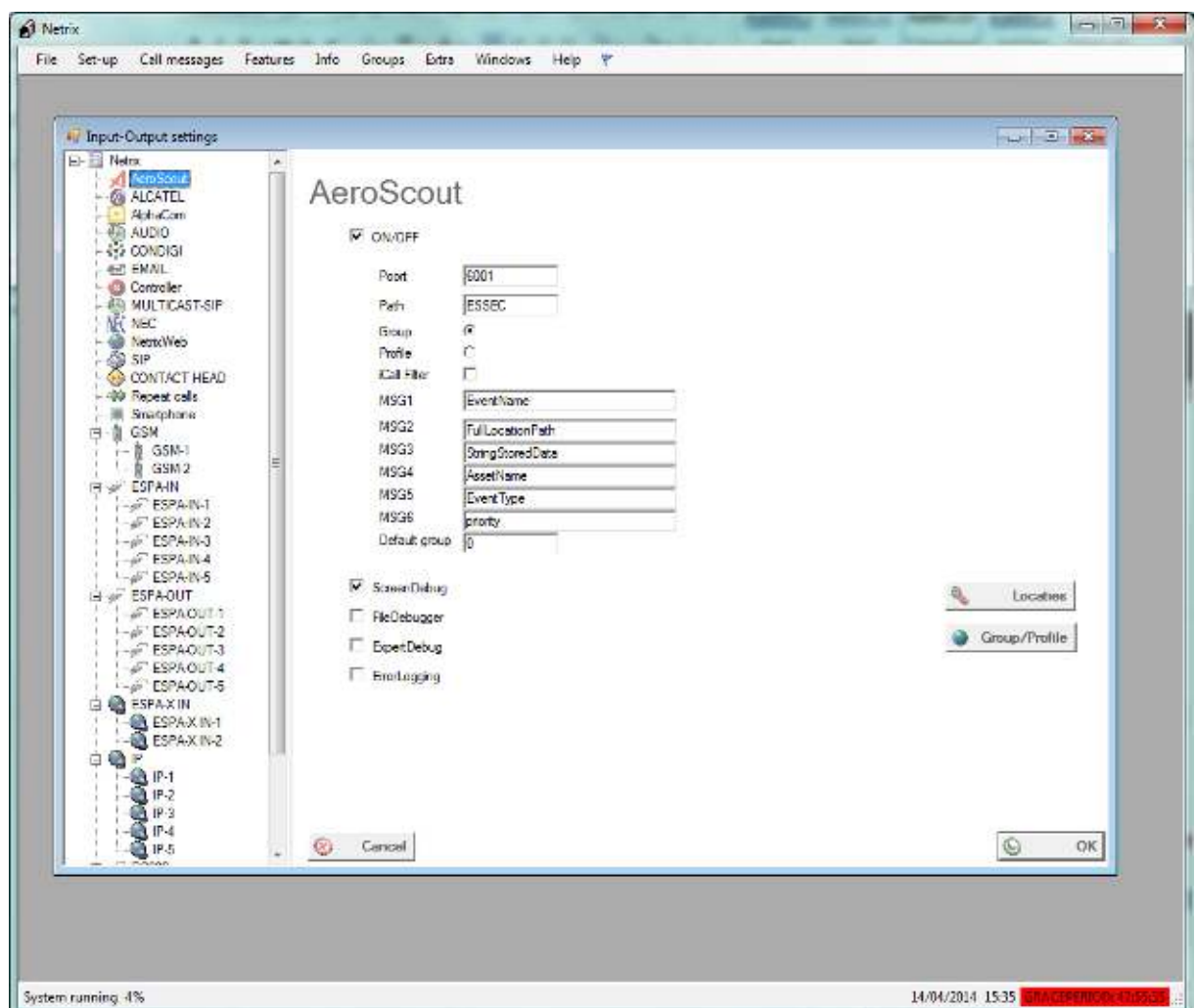
## 1. General purpose

This document describes the implementation, programming and testing of the Aeroscout interface in the Netrix software. The goal is to send text messages from the Aeroscout server to the Netrix.

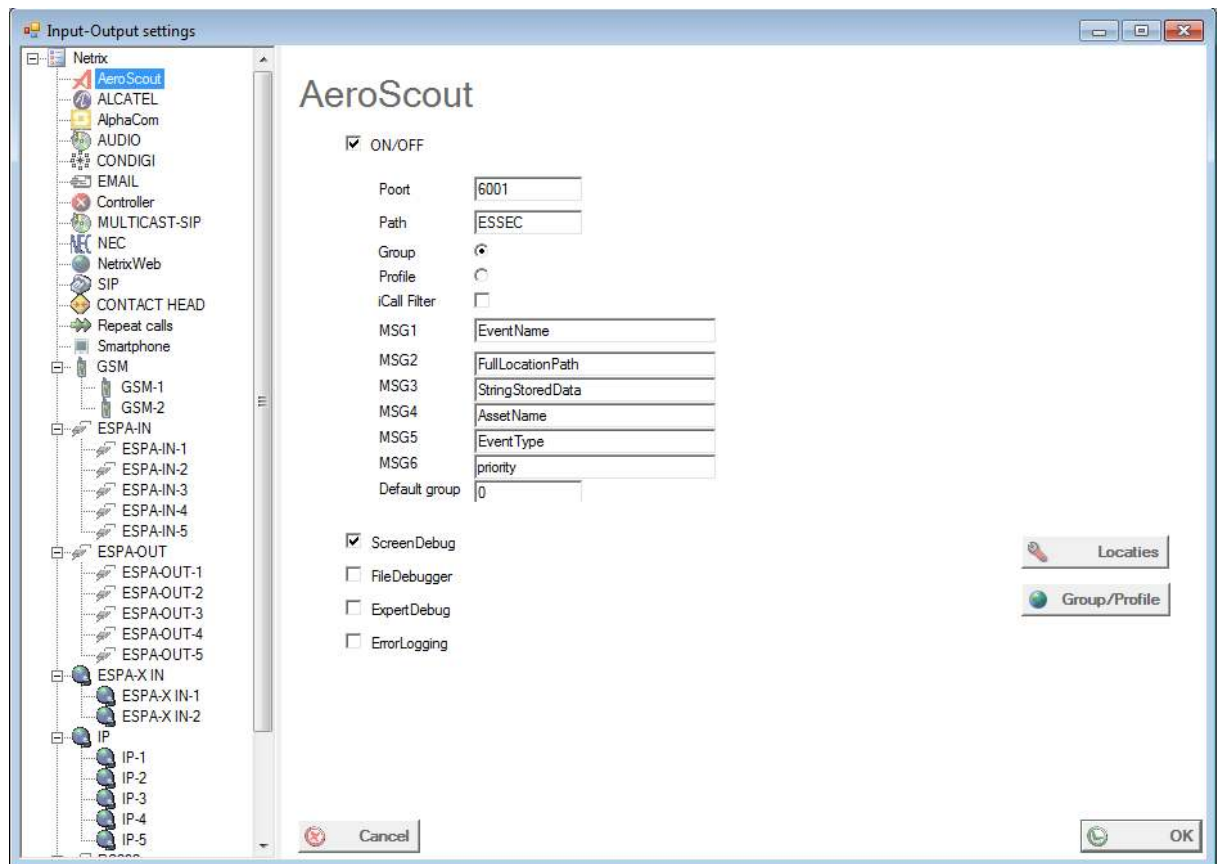
The Aeroscout server communicates with the netrix over TCP/IP. The Aeroscout calls are sent like HTTP posts , so the Aeroscout server only needs to know URL(IP, port and path) on which the Netrix is listening.

## 2. Implementation

Be sure the Netrix and the DMLS are connected to the same Local Area Network(LAN) . Start the Netrix software and go the input-output screen via the menu “Setup→Input-Output”.



In the treeview on the left, you select Aeroscout, so the properties of the Aeroscout interface will appear on the right panel.



**Port:** TCP Port the Netrix is listening to (also open this port in the firewall of the Netrix)

**Path:** Path of the URL (just choose something)

**Group:** Select this option to use groups for incoming messages

**Profile:** select this option to use profiles for incoming messages

**iCall filter:** future use

**MSG1-MSG6:** insert here the name of the parameter you want to capture, if you don't know the names of the parameters, activate the ExpertDebug, and you'll find the names in the debugscreen.

**ScreenDebug:** check this box if you need a debug screen for this interface

**FileDebug:** check this box to log the debug info

**Errorlogging:** Check this box to send errors to the errorlog.

**ExpertDebug:** extended ScreenDebug and FileDebug

## Locations

Translation table for zones. Give each zoneID an appropriate name.

## Group/Profile

Attach the appropriate group or profile number to each eventID you want to capture.

## 3. Programming

After the netrix setup, you will be able to receive Aeroscout calls.

In the Aeroscout server, insert the appropriate calls for the events.

Add an HTTP POST with the URL of the Netrix.

For example:

Netrix IP= 10.1.1.1

Port= 6001

Path=Essec

The HTTP POST URL will be <http://10.1.1.1:6001/Essec>