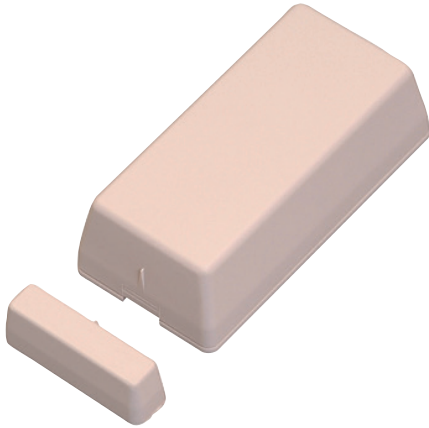


RAC Wireless Contact



- Easy to use and compact
- Battery life-time of 3 years
- Automatic radio daily message
- Low battery monitoring

The RAC Wireless Contact detects the opening or closing of an electrical contact or of a door equipped with a magnet. This will activate a radio signal to a NurseCall unit. The RAC Wireless Contact provides magnetic reed contacts for monitoring doors and windows. The internal reed contacts are activated by an external magnet which can be placed on the marked position. It also has a built-in screw terminal as input for monitoring external alarm device.

Functions

To use as a transmitter for particular events, the alarm can be activated by approaching and/or moving away a magnet, or by the opening and/or closing of an electrical contact. In this case, the alarm is immediately transmitted to the NurseCall system.

Reed Contacts

There is a reed contact on the front side of the device, as in the picture, as well as the left side of the device. The magnet assembly can be mounted within a certain distance of the device in front of the chosen position. When the distance between the magnet and the internal reed switch of the RAC Wireless Contact exceeds a pre-defined value, a radio signal is sent to the NurseCall unit.

Use as a Universal Point Transceiver

For use as a universal point transceiver, an external device can be connected to the terminal block of the RAC Wireless Contact. A closing or opening signal from the external device initiates a radio signal from the RAC Wireless Contact to the NurseCall unit.

Certifications and Approvals

R&TTE 1999/5/EC

EMC 2004/108/EC

LVD 2006/95/EC

EN 50371 (2002)

EN 55022 (2006, A1: 2007)

EN 60950-1 (2011)

EN 300220-2 V2.3.1

EN 301489-1 V1.8.1

EN 301489-3 V1.4.1

EN 50130-4 (1995, A1: 1998, A2: 2003)

Parts Included

Quantity	Component
1	RAC Wireless Contact

Installation/Configuration Notes

Recommendations:

- Allow a minimum height of 20 cm from the ground.
- Do not use on metallic surfaces. If this is not possible, use spacing plates.
- Install the magnet on the moving part (door or window) and the radio transmitter on the frame.
- Avoid using “double side” adhesive tape.
- The RAC is not waterproof.

Technical Specifications

Dimensions (H x W x D)	85 x 40 x 40 mm
Weight	55 g
Frequency	434.01 MHz
Protection class	IP20
Power supply	3V lithium battery CR2032
Consumption	Transmission: < 16 mA Idle mode: < 3 µA
Battery life	3 years, under the following conditions: 3 alarms transmissions without repetition per day and 1 daily test transmission (incl. battery status)
Battery alarm	at approx. 20 % remaining
Automatic battery test	daily check and at every alarm
Permissible temperature	0 °C to 55 °C
Frequency stability (0 to +55 °C)	< ± 2 KHz
Modulation	FSK
Antenna	Integrated
Radiated power	2 mW
Transmission time	2 x 1300 ms
Pause between transmissions	200 to 600 ms (random)
Minimum range in free field	250 m

TeleAlarm SA
Rue du Pont 23
2300 La Chaux-de-Fonds
Switzerland
info@telealarm.com
www.telealarm.com

TeleAlarm UK Ltd.
3 Bedford Place
WC1B 5AH, London
United Kingdom
info-uk@telealarm.com
www.telealarm.com